

Ladies:

Black Ankle-Length Skirt / Trousers

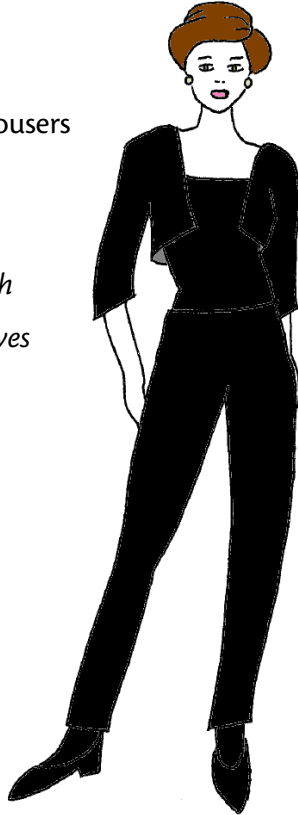
Black Long-Sleeved Blouse

*or ankle-length black dress with
minimum of elbow-length sleeves*

Black Shoes

Black Socks/Tights

No bare shoulders/feet!



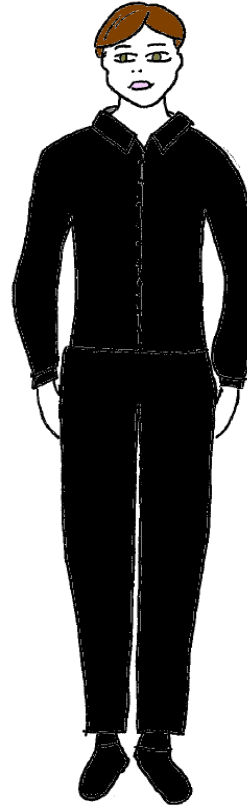
Gents:

Long Black Trousers

Black Long-Sleeved Shirt

Black Socks

Black Shoes



Denim, t-shirts, short skirts, bare midriffs, trainers, DMs etc. are not acceptable.

Performers who are unable to adhere to RCMJD dress codes will not be allowed on stage.